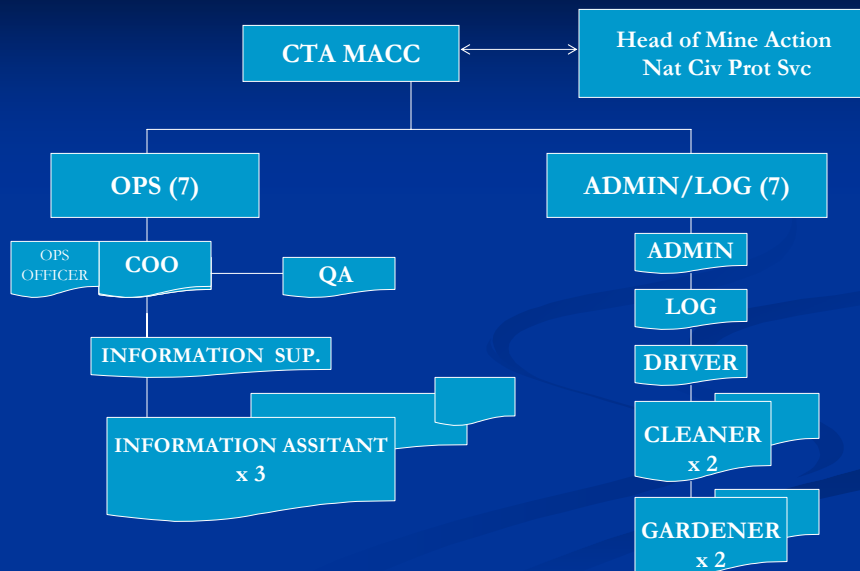


# UN INTEGRATED SUPPORT TO THE BURUNDI NATIONAL HUMANITARIAN MINE ACTION PROGRAMME

*(a coordinated response  
to strengthen the mine action  
capacity development efforts)*

## BURMACC STRUCTURE



## Burundi Information Management

- The BURMACC has been set up in June 2004, within ONUB mission. The information section of the operations department had an active role in the MACC from April 2005.
- It was declared as one of the main mandates, that MACC had to collect, store and disseminate all mine-related information in the ONUB area of operations and humanitarian relief efforts activities.
- Initially populated in an emergency set-up approach to be able to respond quickly to incoming request, the IMSMA database is currently converting to a reliable information carrier to fulfill its objectives.

## Information Management System for Mine Action (IMSMA)



- Thanks to the Geneva International Centre for Humanitarian Demining (GICHD) and IMSMA Regional Coordinator who visited the programme to install and test IMSMA 4.0 version at UNMACC in November 2005 as a pilot test

## Burundi Information Management

- Why an IMSMA System ? Purpose:
- To gather all available information regarding SHA and ERW locations in order to:
  - Assess landmine/ERW contamination;
  - Plan and coordinate HMA to respond to the problems as efficiently as possible;
- Use it as an analytical tool for prioritisation and decision making;
- Integrate socio-economical data with the mine related facts and figures;

## Operational Activities



NGO Swiss Demining Foundation (FSD) has been starting field activities on July 2005 in Burundi. The General Community Survey (GCS) conducted by the Swiss Foundation for Mine Action (FSD) was completed at the end of May 2006 and is now in a position to provide with needed data to planning and implementation of clearance operations as well as emergency recovery and development programmes.

# FORMS

- Refer to the hard copies

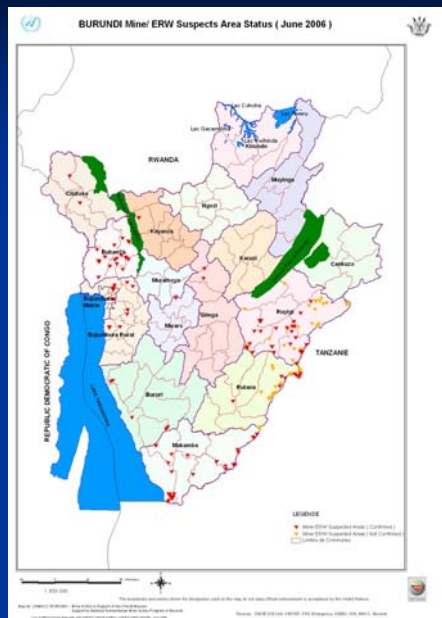
## Burundi Information Management

- IMSMA INPUT:
  - *much closer to field operations needs,*
  - *WYWIWYG( What you want is what you get)*
  - *Easy navigation and integrated GIS*
- IMSMA 4 – Burundi Expectations
  - Operational flexibility;
  - Performance of quality information check and quality field operations control reporting;
  - Information flow/data extensively reviewed and analysed;
  - Meet information management needs of BURMACC;
  - Data stored reflecting all the facets of HMA allow to timely provide necessary information for decision making.

# Burundi Information Management

- **IMSMA OUTPUT: ...to respond efficiently**
- Provide better overview for the projects and better information about progress of activities, including spatial and statistical analysis;
- Provide the NGOs with geographically displayed data and mine related information according to NGOs needs and should therefore, be adjusted to NGOs requests.

Initial major data input consisted of SHAs data from a rapid General Community Survey conducted by the INGO FSD (July 05 – May 06)



PROVINCE	No SHAs		Level of Impact
	Conf	Not Conf	
BUBANZA	31	-	High
RUYIGI	29	28	High
MAKAMBA	30	-	High
BUJUMBURA RURAL	21	-	High
RUTANA	8	27	Medium
BUJUMBURA MAIRIE	7	-	Medium
BUBURI	5	-	Medium
CIBITOKI	2	-	Low
KAYANZA	1	-	Low
MWARO	1	-	Marginal
GITEGA	2	-	Marginal
<b>TOTAL: 137 Conf + 55 Not Conf = 192</b>			

## IN CONCLUSION..



**All of us  
MOBILISED for a  
BURUNDI FREE of  
IMPACT from  
MINES and ERW  
BY 2008!**

**Thank you for your attention!**