

# International Test & Evaluation Program (ITEP)

GICHD & UNMAS workshop Geneva, February 2006



**Alex Keijzer**

**NL Point of Contact for ITEP**

**Representative of ITEP Executive Committee**

International Test &  
Evaluation Program

[www.itep.ws](http://www.itep.ws)

- Mr Chairman, ladies and gentlemen. My name is Alex Keijzer and I am the Netherlands Point of Contact, and member of the Executive Committee for the International Test and Evaluation Program for Humanitarian Demining - ITEP. This week I'm here to listen to your problems, solutions, ideas etc, and to inform you about ITEP and the knowledge our members have, or we can make available for you.
- On the other hand I'm here to listen and take your problems, solutions ideas etc with me, to encourage the ITEP-members to work on these issues.

# Outline

- What is ITEP - some history
- Organization
- Mission
- ITEP workplan
  - trends
  - projects
- Future ITEP focus points
- Questions

International Test and Evaluation  
Program ([www.itep.ws](http://www.itep.ws))

- In my short presentation I will address the following issues
- the history of ITEP
- its organization
- the mission of ITEP, and what ITEP does
- Then I will explain something on the workplan, and zoom in on some of the projects
- At the end I will reveal the focus of ITEP and answer your questions
- Now, let me start with the history

## What is ITEP – some history

### The creation of ITEP

- Ottawa treaty
- US and SE
- UK, CA, BE, EU, NL (GE later)
- MoU negotiations 1999-2000



International Test and Evaluation  
Program ([www.itep.ws](http://www.itep.ws))

- As we all know, in 1997 many nations signed the Ottawa treaty to ban the use of landmines, and work on the removal of the legacy. That means the removal of all mines that are laid throughout the world. Some mines are old, like the old minefields from the second world war, but most of them are from more recent years.
- The minefields have in common that they threaten the local communities, and the mines limit these communities in developing themselves.
- After signing the Ottawa treaty, the US proposed to start working on technical details how to start the removal of mines. How should it be coordinated, what should be coordinated, and and who will coordinate it.
- The US and Sweden got in contact, and the circle widened to Canada, Belgium, the European Union and The Netherlands. Germany joint the ITEP some years after the start.
- All these countries are able and willing to spend money on Humanitarian Demining and to do research to solve the problems.
- It took some time to get the Memorandum of understanding ready for signing.....

## What is ITEP – some history

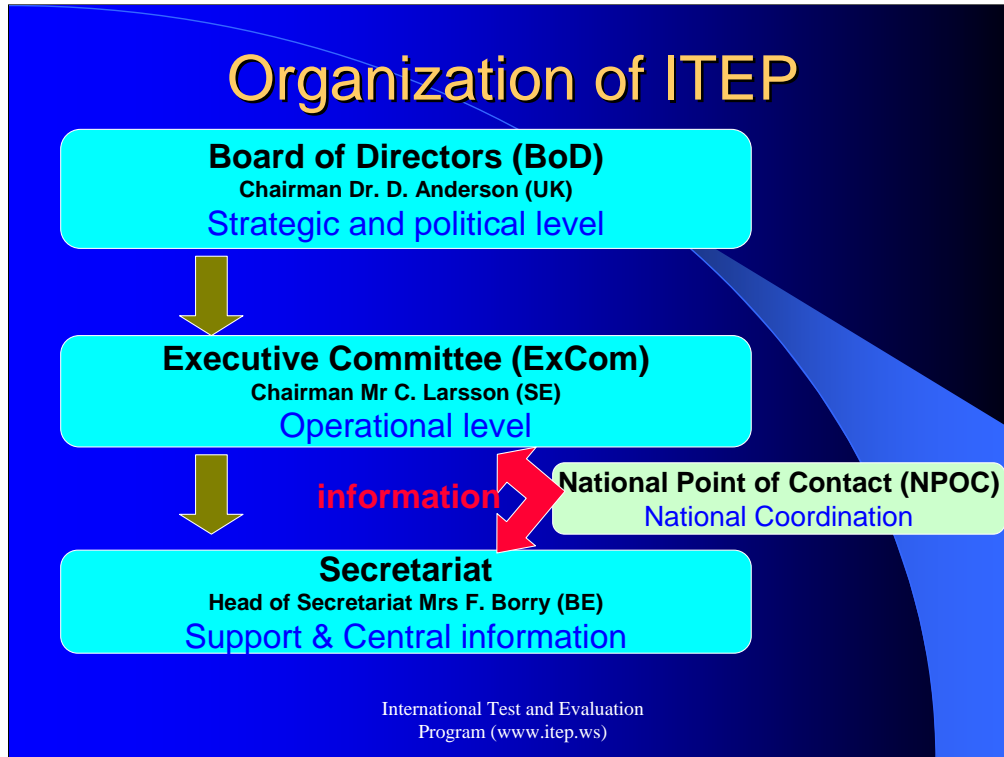
ITEP was finally created by signing  
the ITEP-MoU in Brussels 17 July 2000

Germany joins later  
June 2002



International Test and Evaluation  
Program ([www.itep.ws](http://www.itep.ws))

- .... And by the signing of a Memorandum of Understanding in July 2000, ITEP was born. ITEP is a cooperation program connecting today 7 nations and the EC in supporting humanitarian demining efforts through test and evaluation.



As the name suggests, ITEP is not a formal body, but a program for international test & evaluation. This means that there is no ITEP-money, but every country finances its own proposals. That makes discussions very easy because we do not have to fight within ITEP to get projects supported with budget. We keep that as national sport, every nation has it's own commitment to work on Humanitarian Demining, and how to spend the available budget, and of course how much to spend.

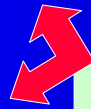
Although we are not a formal body, ITEP needs some structure. Therefore we have a Board of Directors, working on the strategic and political level. Tasking the Executive Committee with the guidelines for the operational level.

The support of ITEP, including the central point of information is handled by ITEP's secretariat. Mrs Borry, as head of the secretariat, is also the master of our Website. This website is very important for ITEP, both for internal use, and for spreading the information to the users.

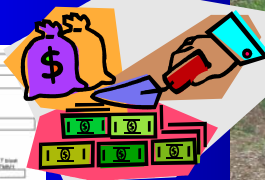
Apart from the formal structure every nation has it's national Point of contact, the linking pin for ITEP to the national activities. For some countries like The Netherlands, the Excom-member is the national Point of Contact.

# Organization of ITEP

Inform ITEP



National Point of Contact (NPOC)  
National Coordination



International Test and Evaluation  
Program ([www.itep.ws](http://www.itep.ws))

The national Points of Contact of the member states are the national coordinators for ITEP. Most of the time they are the spider in the national web of Humanitarian Demining, knowing the national ambition, interests, activities, budgets and priorities. It is vital to ITEP that all the information that is available at national level, is brought to the attention to the Excom, but also through the secretariat to the end-users like you.

I won't use more of our time on the organization, but, as far as I have seen the last years, it works.

# Mission of ITEP

## Mission statement

ITEP's mission is to **develop standards**, coordinate and perform **tests** of materials and methods, and **spread information** about the results to all other interested parties.

International Test and Evaluation  
Program ([www.itep.ws](http://www.itep.ws))

To explain to you the mission of ITEP, I will first give our mission statement.

ITEP's mission is to develop standards, ..... coordinate and perform tests of materials and methods, ..... and spread information about the results to all other interested parties.

# Mission of ITEP

## Objective

ITEP's aim is to **increase efforts**  
within global demining through

generating & collecting & distributing

objective & independent & scientifically based  
Test & Evaluation data of

materials & systems & methods  
for humanitarian demining

International Test and Evaluation  
Program ([www.itep.ws](http://www.itep.ws))

The objective of ITEP is to increase efforts by generating, collecting and distributing ..... all objective, independent and scientifically based .....T&E data

# Mission of ITEP

## What does ITEP do?

- **Does NOT**
  - certify nor license any equipment & facilities
  - execute research and development
- **DOES**
  - T&E of COTS, systems under development and promising technologies
  - develop standards, methodologies, best practice
  - collect, generate, and distribute neutral, scientifically sound, and objective data in the interest of the community
  - collaborate with UNMAS, GICHD and others

International Test and Evaluation  
Program ([www.itep.ws](http://www.itep.ws))

•What can you then expect from ITEP? ITEP does not certify or license any equipment nor facilities. We do not execute research nor development. That is done by the nations themselves and other organizations.

What ITEP does is:

- Test and evaluate ..... Commercial Of The Shelf, ..... systems under development ..... and promising technologies.
- We develop standards, methodologies and best practice for T&E.
- Finally we collect, generate and distribute scientifically sound and objective data.

For the acceptance of those data we collaborate and use the feedback from the field such as NGOs, MACs and have as permanent observers in ITEP representatives from United Nations Mine Action Service and our host, the Geneva International Centre for Humanitarian Demining

By doing all this we support the process of field acceptance of new technologies.

- Now let us have a look at the ITEP Workplan :

# ITEP Work Plan

## general

- Basic working document
  - overview of T&E related activities of the different member countries (Participants)
- How does it work?
  - Participants report regularly on their activities (3 times/year)
  - Participants submit final test reports for publication
- What does it mean?
  - national T&E activities are known
    - reduce duplication within ITEP
    - identify collaborative efforts
  - T&E reports are publicly available and easily accessible on the ITEP website

International Test and Evaluation  
Program ([www.itep.ws](http://www.itep.ws))

The work plan is an living document and is updated several times a year

It is a basic working document giving an overview of the T&E related activities among the participants.

The participants report regularly on their activities and submit final test reports for publication.

By setting up the work plan the national T&E actions are known and we can identify and stimulate collaboration and reduce duplication.

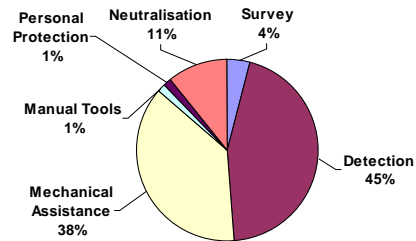
The T&E reports are publicly available and easily accessible on the ITEP website. There is of course also a search function to support you looking for a certain subject. I'll come back on the website at the end of my presentation

# ITEP Work Plan trends

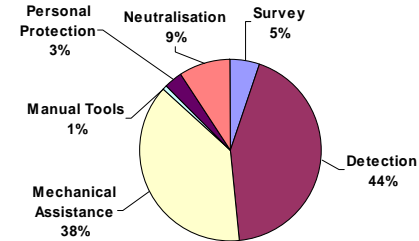
2005

2006

*Distribution of ITEP Work Plan Projects according to Technical Category (2005)  
(Postponed and cancelled projects not included)*



*Distribution of ITEP Work Plan Projects according to Technical Category (2006)  
(Postponed and cancelled projects not included)*



International Test and Evaluation Program ([www.itep.ws](http://www.itep.ws))

As you see there is not so much change in the distribution. The focus is still on detection and mechanical equipment, but personal protection is getting more attention, in favor of neutralization.

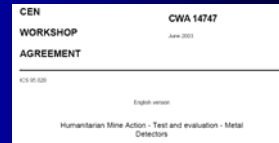
Now I will give some examples of the project in the work plan

# ITEP Work Plan

## projects

### The development of standards

- CEN Workshop Agreement (CWA) 14747, on T&E of metal detectors (2003)
- CWA 15044, on T&E of Demining Machines (2004)
- Starting process on CWA for testing personal protective equipment
- Planned CWA for dual/multisensors



International Test and Evaluation  
Program ([www.itep.ws](http://www.itep.ws))

### **Some projects concern the development of T&E Standards:**

- CWA is the abbreviation for CEN (European Standardization Committee) Workshop Agreement.
- We succeeded in formalizing the standard in 2.5 years in stead of the normal period of 6 years. The standard for mechanical equipment was ready within 1.5 years. We are now in the implementation phase of CWA for metal detectors.
- Mechanical Assistance Equipment, being one of the other main tools for humanitarian demining clearance, will now be assessed against common accepted standards described by the CWA. This tool is available.
- Development of standards for PPE are started and the plan is to start the process also for dual/multisensors.

# ITEP Work Plan projects

## Test & Evaluation of equipment

- Collaborative testing of MAE by ITEP Working Group on T&E of MAE
- Regional testing of current COTS metal detectors, STEM D
- First efforts directed to field trials of a COTS dual sensors in humanitarian demining
- Outreach through participation of technicians from mine-affected countries in ITEP trials
- Technical collaboration with GICHD on testing of manual clearance methods

International Test and Evaluation  
Program ([www.itep.ws](http://www.itep.ws))

### **many projects concern the test and evaluation of equipment**

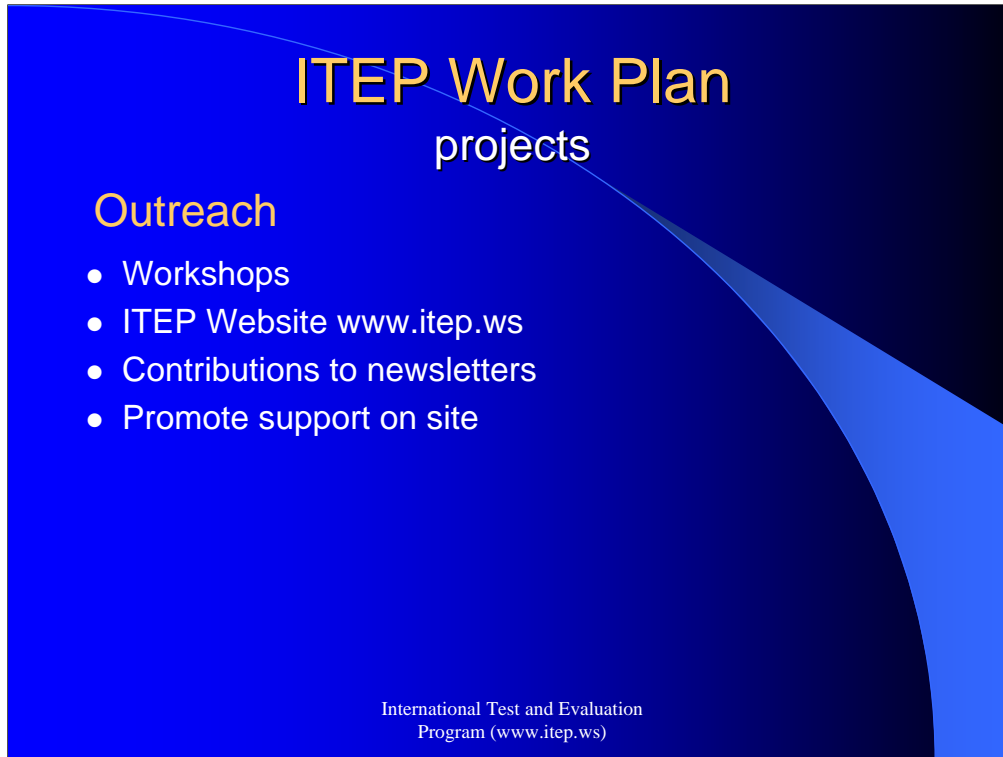
Collaborative testing of Mechanical Assistance Equipment by ITEP Working Group on T&E of MAE (like tests of Bozena-4 in Thailand and Sweden)

Regional testing in Laos, Mozambique and Croatia with support of the local Mine Action Centres of current COTS metal detectors like STEM D and the Russian and Chinese detectors.

Field trials of a COTS dual sensors in humanitarian demining (HD-HSTAMIDS) in Thailand, Namibia and Afghanistan, and tests of the Minehound in Cambodia, Bosnia, Angola

Outreach through participation of technicians from mine-affected countries in ITEP trials

Technical collaboration with the Geneva International Centre on testing of manual clearance methods



- For the outreach, to get the information to the right users, ITEP-members attend workshops, organize workshops, seminars etc, and invite users and money providers for field or laboratory tests
- the complete Work Plan is available on our website - [www.itep.ws](http://www.itep.ws), but also the documents like test reports are available on the website.
- We contribute to newsletters of UNMAS and GICHD
- promote and coordinate the support on site in mine affected countries.

## Future ITEP Focus Points

- Continuation of confirmed and accepted activities
- Further collaboration in the development of standards and other activities within ITEP and collaborating entities
- **Keep up with field requirements with flexible reaction to requests**
- Increased attention to residual risk assessment needs when testing equipment
- Deliver useful data for field acceptance or improvement of tested equipment

International Test and Evaluation  
Program ([www.itep.ws](http://www.itep.ws))

### Focus points in ITEP for the future:

Further collaboration in advance coordination of activities.

More focus on the field requirements

- Being updated by feedback and having flexibility to react on short notice, and this is main reason that ITEP is here this week.

Residual risk assessment

- Mechanical support for demining with detailed trials focussed on what the mechanical tool is leaving behind
- Detection probability of sensors
- Fragmentation cover of PPE including neck and head protection

The main aim should and will be to deliver the message what reliability is achieved so that people in the mine affected countries want, can and will understand and use it

## ITEP: provides information on

- News and activities
- Reports on T&E of HD equipment
- T&E facilities from ITEP participants

[www.itep.ws](http://www.itep.ws)



International Test and Evaluation Program ([www.itep.ws](http://www.itep.ws))

Before I end my presentation I will ask your attention again for our website [www.itep.ws](http://www.itep.ws)

ITEP provides information to all possible users, and I haven't heard these days that access to internet is a problem for you.

The website is our window to the Humanitarian Demining Community. The main content includes a searchable database with reports and documentation to T&E and of course the main links to the Work Plan and the experience database. And I want to emphasize here that the publications are not only those of the 8 members, but we also provide reports of, or links to all other relevant information and organizations.

You also find documentation on the test facilities of all ITEP participants.

I have brought some brochures with the information of ITEP, its work plan and the national points of contact.



Before you give me any questions and seeing all the flags in this picture I must tell you that the working language in ITEP is English.

I will only be able to answer your questions if they are in English, and Dutch or Afrikaans of course.

Thank you and please take one of the brochures for more information.