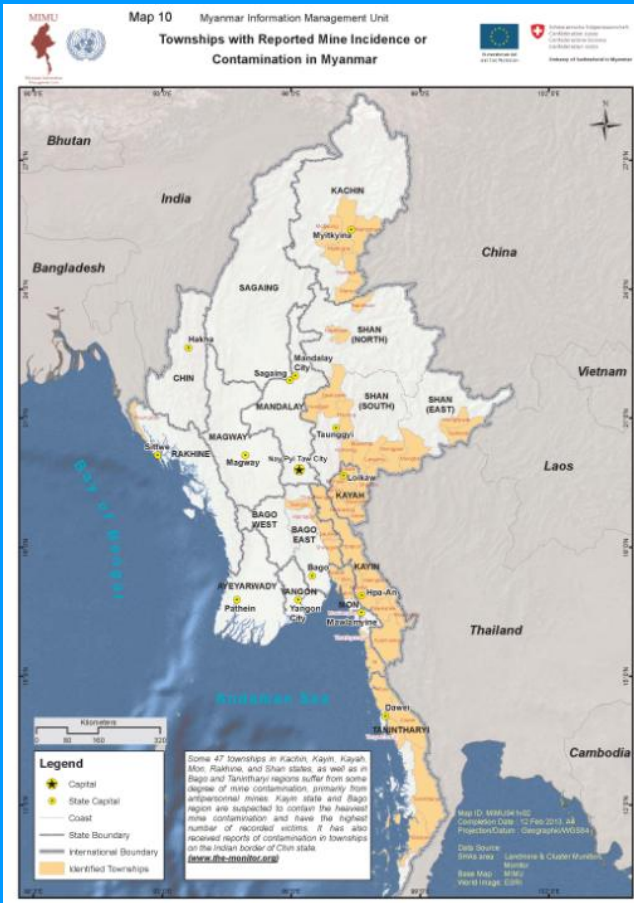




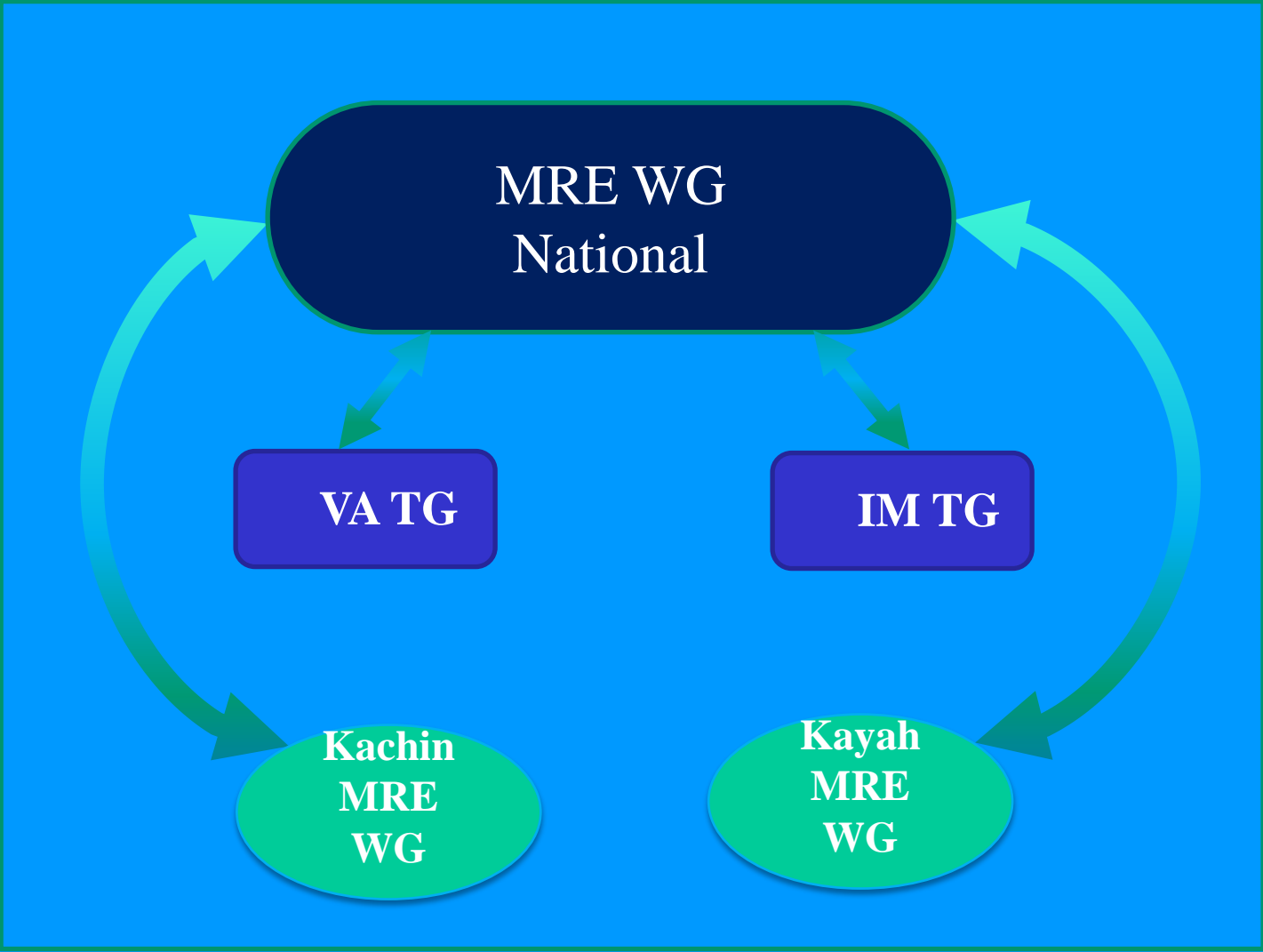
MYANMAR



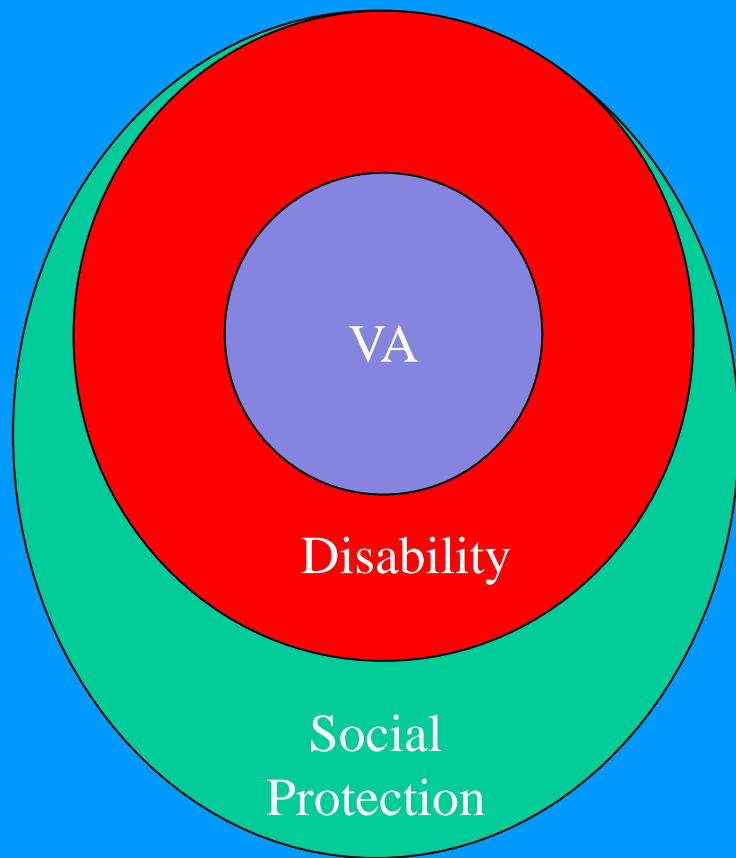
Victim Assistance & Mine Risk Education



Presented by Dr San San Aye



Victim Assistance: an integrated approach



- **Legal Framework on Disability**
 - ✓ Myanmar ratified UN Convention of the Right of persons with disability in 2011
 - ✓ National law on Disability – presented to Parliament in Jan. 2015
- **Social Protection Strategy**
 - ✓ December 2014: Presidential order for a *universal social protection system*
 - ✓ 2 flagships = *allowance for people with disabilities + integrated protection services*

FLAGSHIP for SOCIAL PROTECTION STRATEGY : ALLOWANCE FOR PEOPLE WITH DISABILITIES

Objective: To support the well-being of all those with disabilities, and to support their access to services that promote all-round development and their best interests, especially during childhood

Parameter	Recommendation
Description	Cash benefit to all with disabilities
Lead Agency/Provider	MSWRR, Ministry of Home Affairs, MoE, MoH, Ministry of Population/development, township child rights committees, CSOs, UN agencies, etc.
Phasing	Launch 2016 once certification system developed by DSW
Benefit duration	Through older age
Benefit level and type	Cash benefit of 16,000 Kyats/month for child, 30,000 Kyats/month adult.
Conditionality	All certified with disabilities
Universal or targeted	Universal
Geographic scope	Entire country
Cost	0.30% GDP (2016)

FLAGSHIP: INTEGRATED SOCIAL PROTECTION SERVICES



Objective: To assess and respond to the social needs of venerable groups, responding to the multiple dimensions of vulnerabilities and coordinating interventions

Parameter	Recommendation
Oversight responsibility	MSWRR
Other sectors represented	Health, education, rural development, labour, Home affairs (GAD, Police), finance, population and immigration, justice. Civil society fully involved
How programmes coordinated	Committees are set up at national, state, district and township level (linked with the TDSC) Protocols of cooperation established between services, defining roles and responsibilities
Other	Target 6,000 social workers and 330 Centres over 5 years
Cost	0,02% of GDP

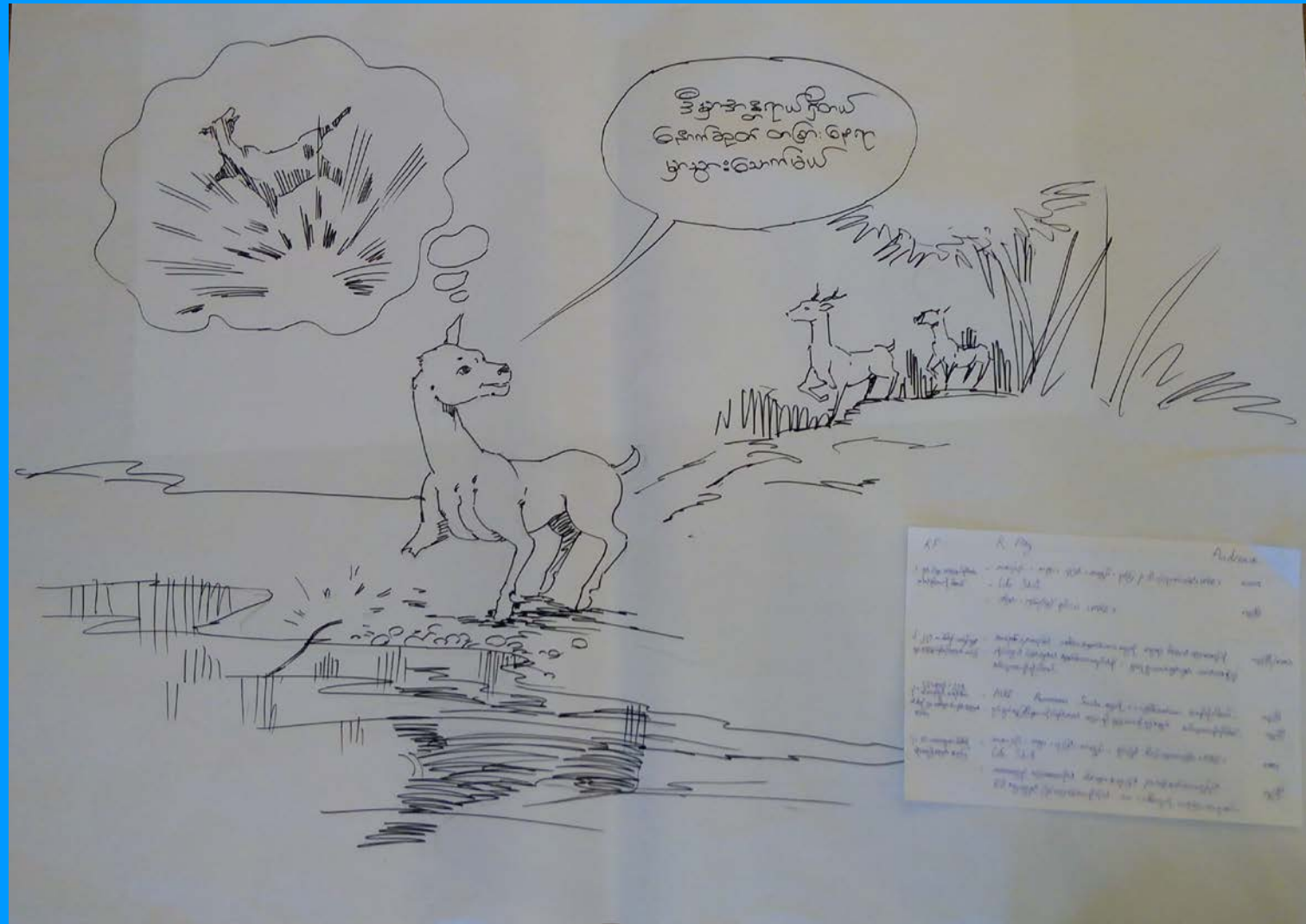
Challenge & Advocacy

Need to invest financial resource in human and social development

Social Spending in 2014-15

- ✓ Health: 3,4% of total budget – 1% of GDP
- ✓ Education: 6% of total budget – 2% of GDP
- ✓ Social Welfare: 0,08% of total budget – **0,02% of GDP...e**

Mine Risk Education



Finalization of the first KAP survey

- ✓ **1st baseline** – will allow to measure change
- ✓ **Evidence-based** common MRE tool kit about to be **field tested**

- ✓ **15-month process...but...**

- 5 states and regions /41 villages/ 390 households/390 interviews with children.

- established a consultation process with army, ethnic armed groups, communities at Union, State/Region and Local levels



Findings to inform programming & advocacy

- **3 out of 4 children interviewed have never received any information** on mines- even fewer adults have received any form of mine risk education
- **41% of men and women believe that prodding** with the use of a bamboo, wooden or metal stick is a **safe way** to check for mines or explosive devices
- **Broader conflict drivers and poverty reinforce risk taking behavior.** Access to livelihoods remains a concern overriding mine risks – 65% of the respondents reported accident which occurred during the collection of forest products.



unicef 

Watch Your Step!

THANK YOU!

